



3 Cannonfields, Hathersage, Derbyshire, S32 1AG

Saxton Mee

## 3 Cannonfields

Asking Price

# £510,000

In a great location within a very short walk of the centre of this very sought after Peak District village. Charming and exceedingly deceptive four double Bedrooms, two Bathroom mid-terrace cottage with some lovely features, great views to the front and rear over the valley, offroad parking, and for sale with no onward chain.

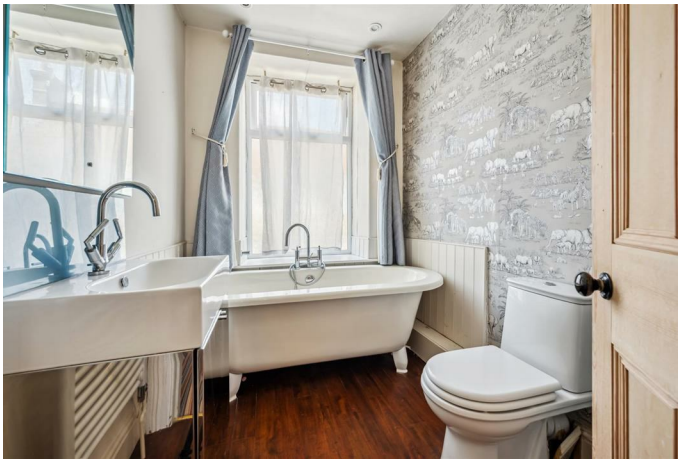
Long entrance Hall, Sitting room with feature gritstone fireplace and multifuel stove, good sized Dining room open through to bespoke, fitted Kitchen, rear Conservatory/Utility area. To the first floor; Master Bedroom with stunning views and ensuite shower room, double Bedroom two, and family Bathroom with roll top bath. To the second floor; two further double Bedrooms and separate WC and hand basin.

Outside; a small front Garden. To the rear; a south-westerly facing courtyard Garden with patio and view to the rear over to Shatton and Abney moor, offroad parking with rear access, and outbuilding.

Hathersage village has a wealth of amenities with good shops, restaurants, outdoor swimming pool, tennis courts, and train station with access to Manchester and Sheffield.

- Sought After Village Setting with Fabulous Views over the Valley
- Four Double Bedrooms and Two Bathrooms
- Rear Access and Offroad Parking
- Spacious and Flexible Living Accommodation
- Peaceful Setting
- Excellent Local Amenities including Train Station
- No Onward Chain
- EPC : D





### 3 Cannonfields



**Approx. Gross Internal Floor Area 1648 sq. ft / 153.10 sq. m**

Illustration for identification purposes only, measurements are approximate, not to scale.  
Produced by Elements Property

While we endeavour to make our sales particulars fair, accurate and reliable, they are only a general guide to the property and, accordingly, if there is any point, which is of particular importance to you, please contact the relevant office. The Agents have not tested any apparatus, equipment, fittings or services and so cannot verify they are in working order. The buyer is advised to obtain verification. Please note all the measurement details are approximate and should not be relied upon as exact. All plans, floor plans and maps are for guidance purposes only and are not to scale. Under no circumstances should they be relied upon as exact or for use in planning carpets and other such fixtures, fittings or furnishings. YOUR HOME IS AT RISK IF YOU DO NOT KEEP UP REPAYMENTS ON A MORTGAGE OR OTHER LOAN SECURED ON IT. 'A Life Assurance policy may be requested.' 'Written Quotations of credit terms available on request.'

Banner Cross  
T: 0114 268 3241  
E: [bannercross@saxtonmee.co.uk](mailto:bannercross@saxtonmee.co.uk)  
[www.saxtonmee.co.uk](http://www.saxtonmee.co.uk)

Hathersage  
T: 01433 650009  
E: [hathersage@saxtonmee.co.uk](mailto:hathersage@saxtonmee.co.uk)

Bakewell  
T: 01629 815307  
E: [bakewell@saxtonmee.co.uk](mailto:bakewell@saxtonmee.co.uk)

Matlock  
T: 01629 828250  
E: [matlock@saxtonmee.co.uk](mailto:matlock@saxtonmee.co.uk)

